



HARROW
LIDE
SCHOOL
哈罗礼德学校
HENGQIN 横琴

Living & Teaching in Hengqin – the Harrow Guide



Content

Table of Contents

INFORMATION FOR PROSPECTIVE CANDIDATES	1
ASIA INTERNATIONAL SCHOOL LIMITED	3
The Leading Provider of World Class British International Education	3
Harrow-450YearsofHeritage	3
HARROWLIDEEDUCATION	4
The outcome of Harrow LiDe education can be summarized as the ABCD	5
Chinese Culture and Identity	6
Develop Holistically as Learners, Individuals, and Leaders	6
The outcome (ABCD) of Harrow LiDe education is founded on the 123 of education	7
INTRODUCTIONOFHARROWHENGQIN	9
Educational Excellence for Life and Leadership	10
HARROWHENGQIN FACILITIES	10
THE BENEFITS OF WORKING WITH THE HARROW FAMILY IN ASIA	12
WHAT WE ARE LOOKING FOR	13
WHY HARROW HENGQIN	15
LIVING AND WORKING IN HENGQIN	16
ABOUT HENGQIN& ZHUHAI	16
WEATHER	17
TRANSPORTATION	17
COST OF LIVING	18
FOOD	19
LOCAL FOOD RECOMMENDED	19
HOTELS	21
HOSPITALS AND CLINICS	21
SUPERMARKETS	22
ATTRACTIONS	23

ASIA INTERNATIONAL SCHOOL LIMITED



Inspiring Future Generations
十年树木 百年树人

The Leading Provider of World Class British International Education

Asia International School Limited (AISL) Group is a leading provider of education services in Asia. The AISL Harrow family of schools comprises Harrow International Schools, Harrow LiDe Schools, Harrow Hong Kong Children School and Harrow Little Lions Early Years Centres, which proudly draw on the 450-year heritage of Harrow School in the UK, embracing the Harrow Values of Courage, Honour, Humility, and Fellowship. AISL is committed to the highest standards and quality of education for all students, delivering educational excellence for life and leadership.



Harrow - 450 Years of Heritage

Harrow School was founded in London in 1572 under a Royal Charter granted by Elizabeth I. Over the four centuries since its founding, it has developed into one of the world's most successful private schools, renowned for its traditions, academic rigour, holistic education, and commitment to service learning. Harrow has educated renowned world leaders including Sir Winston Churchill, 'the Greatest Briton', Jawaharlal Nehru, the first Prime Minister of independent India, the poet Lord Byron and numerous Nobel laureates. It is these illustrious Old Harrovians and the values they cherished - courage, honour, humility and fellowship - that have established Harrow School's global reputation and shaped the celebrated institution it is today.

THE HARROW LiDE EDUCATION

Curated specially for Chinese students, a Harrow LiDe education provides them with the international qualifications, language, knowledge and personal attributes required to thrive as a learner, individual and leader in school, within world leading international universities and throughout the rest of their life.



Harrow LiDe schools, like all AISL Harrow Schools, draw on the traditions in education synonymous with Harrow School in the UK, whilst incorporating a spirit of innovation. They promote the Harrow Values of courage, honour, humility, and fellowship, facilitating the holistic development of students which enables them to navigate between the East and the West as future global leaders.



The outcome of Harrow LiDe education can be summarized as the ABCD

Academic Excellence

The Harrow LiDe pedagogical model is a research informed, modern and internationalised approach to teaching, reflecting the nature of the knowledge and how students are to use it in a unit of study. The model is designed to personalise learning opportunities ensuring each student receives specific support and can reach his/her full potential.

Students in Harrow LiDe will undertake CNC related assessments as required by the district, but these will not centrally shape the outcome of a LiDe education. The Global Scale of English (GSE) is used as a standardized assessment tool to access performance level. Teachers use data to continuously track student progress and provide timely, individualised support. By taking such an approach, our students are effectively supported when learning English and are fully prepared for international qualifications when transitioning to the High School. This will enable students to enter world-class universities with exceptional IGCSE and A Level results.

Bilingualism

A core purpose of Harrow LiDe education is to develop students' bilingual minds, enabling them to utilise and transition between Mandarin and English languages at a social, cultural, and technical level. Students are expected to develop bilingualism, that is, secure fluency in English to meet international exam standards for entering top universities worldwide, along with native levels in Putonghua that exceed Chinese National Curriculum requirements.

Creating the best conditions for learning, collaborative planning and teaching involves having multiple staff in the class supporting learning, including subject or class teachers supported by Chinese speaking staff. Through this approach, teachers can plan specifically for the needs and strengths of each student and deliver a high-quality and integrated bilingual curriculum that increases student attainment and development. Students receive personalized support in English learning, whilst being exposed to two role models from whom they learn and adapt accordingly.



Chinese Culture and Identity

Whilst providing internationalised education, the Harrow LiDe model is designed to develop Chinese language fluency and sophistication together with enabling students to develop an identity that reflects the history, heritage, and culture of China, allowing them to become globalized citizens with Chinese roots.



Develop Holistically as Learners, Individuals, and Leaders

Harrow LiDe education prioritises the holistic development of students, empowering them to live as the best version of themselves and to become future leaders. An objective of the LiDe pedagogical approach is to promote leadership and related core soft skills including collaboration, communication, critical thinking, and creativity. Self-management, highly effective interpersonal and intercultural skills are also taught and promoted in the LiDe curriculum.

Students are recognised and rewarded with the AISL Harrow Diploma, for their commitment and progress of personal development within and beyond their school experiences.

The outcome of Harrow LiDe education is founded on the 123 of education

1. Within the School Environment: Harrow LiDe Curriculum and Super Curriculum

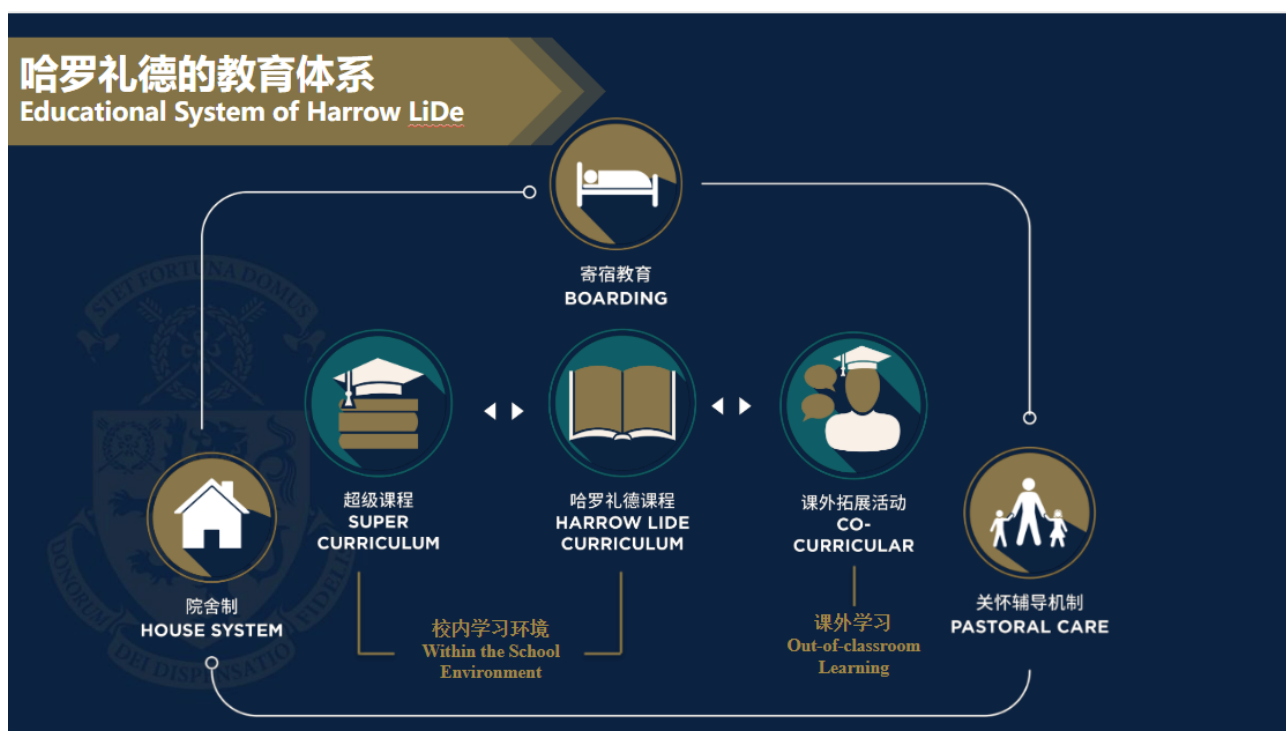
Specifically designed for Chinese students, the Harrow LiDe Curriculum is a research-informed and cutting-edge pedagogical approach. A sophisticated and demanding approach to English language acquisition is adopted from the Early Years through to High School. This is weaved in a fluent manner with Putonghua. Through planned and purposeful immersion students can communicate and tackle problems by applying subject based cognition across the two languages.

The Harrow LiDe Super Curriculum enhances the LiDe Curriculum by providing extended learning opportunities. These courses, tailored to students' interests, enrich their learning experience, deepen their understanding of complex subjects, and offer personalised guidance on furthering their education and exploring career paths. By developing their skills and interests and unleashing their potential, we aim to cultivate lifelong learners among our students.

2. Out-of-classroom Learning

We believe vital learning takes place outside of the classroom as well. Our Co-curricular programmes broaden horizons, instill a sense of adventure, and foster the six leadership attributes. In keeping with our motto, Educational Excellence for Life and Leadership, every student is required to make a positive contribution to his or her community.

3. Pastoral Care System, House System and Boarding



Pastoral Care System

Pastoral care at Harrow LiDe is central to its vision and ethos. Pastoral care systems focus on the child as an individual, fully developing each student's values, identity and aptitudes. Pastoral care provision for younger pupils is provided by the class teachers. It comprises a proactive and positive approach to personal and social development along with personal guidance and support from the teacher.

Older pupils are allocated to a House where the Housemaster or Housemistress (HM) and tutors will provide guidance, mentoring and coaching to support student development.

House System



A house system is central to Pastoral care provision through a team of pastoral leaders and tutors. Students benefit from mentoring and support from HMs and tutors, along with peer mentoring and coaching from older pupils. Older students will take on a leadership role and serve as role models. Through contributing to House events and competitions, students engender a sense of belonging and collegiality while building a bond with fellow students from multiple year groups. For Harrow LiDe students, the House is very much their home in school.

Boarding

Harrow Boarding aims to develop students' independence, self-regulation, confidence and interpersonal skills. Boarding offers extended learning opportunities, including supervised evening study hours and a range of additional sporting, academic, creative and wellbeing activities after school and at weekends. These sessions provide boarders with further opportunities to access the school's facilities, develop new and existing skills, support their mental health, and interact with peers from other Houses – all the while being continually supported by staff.

THE FOUNDING OF HARROW HENGQIN

Harrow LiDe School Hengqin (Harrow Hengqin), a K-12 Day and Boarding school located in Hengqin, represents a significant milestone for bilingual education within the Greater Bay Area.

With the combination of a bespoke bilingual curriculum, a bicultural focus and the traditions of a 450-year Harrow Legacy, Harrow Hengqin is on a journey to deliver a world class education for 900 students (including up to 300 boarders), on a 50,000m2 site near the Novotown development, in the middle of the island.

The campus provides a combination of attractive, state-of-the-art facilities in addition to interactive outdoor learning spaces that encourage students to engage with the natural environment. Facilities are linked by green pathways and a range of multipurpose spaces are distributed across the campus, supporting learner collaboration and providing a sense of community.

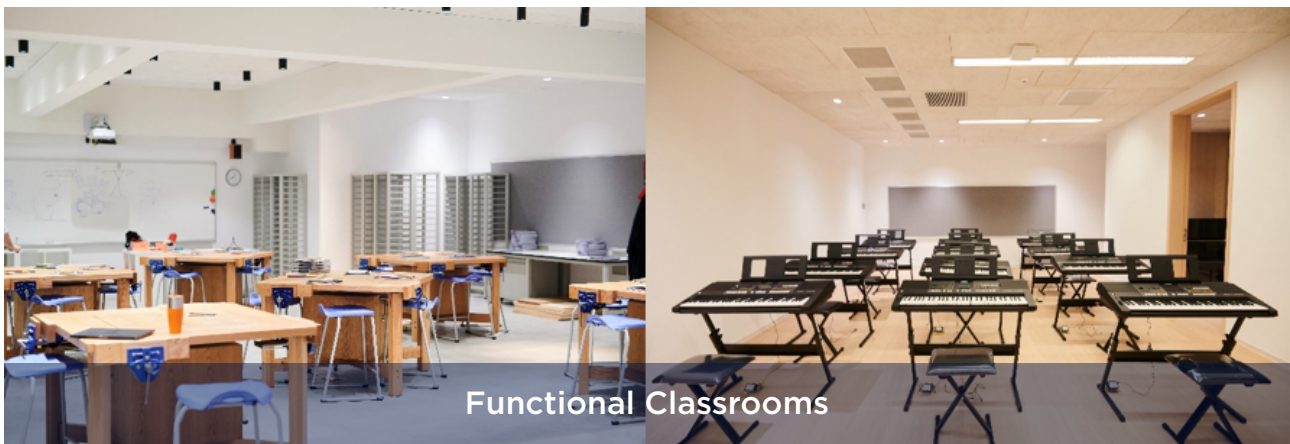
Harrow Hengqin is committed to the cultivation of bi-lingual and bi-cultural students so that “Educational Excellence for Life and Leadership” will develop in Hengqin. We believe the location of Harrow Hengqin represents a significant milestone for bi-lingual education within the Greater Bay Area.



Educational Excellence for Life and Leadership

AISL has been building flagships of high-quality education with a forward-looking approach through diverse curricula and university pathways offered by the AISL Harrow Family of Schools: Harrow International Schools (offering the English National Curriculum, IGCSE, and A Level), Harrow LiDe Schools (bilingual schools offering Grades 1 to 12, IGCSE, and A Level), and Harrow Hong Kong Children School (offering the China Hong Kong curriculum and DSE/IB). As of 2023, the Group has established five bilingual private schools named Harrow LiDe Schools.

HARROW HENGQIN FACILITIES





Outdoor Sports Ground



Indoor Stadium



Thermostatic Swimming Pool



THE BENEFITS OF WORKING WITH THE HARROW FAMILY IN ASIA

The Harrow family is dynamic. We have been operating international schools for over 25 years and are one of the longest established UK independent school groups operating in Asia. We have taken our time to be ready for further expansion. Our evolution has been cautious and successful.

With high levels of teacher retention, strong investment in talent management and a commitment to the development of leadership capacity, our family is now well placed to expand further. Teachers joining us will benefit from the capabilities already available within our schools whilst, at the same time, bringing fresh ideas and expertise from previous professional lives.

Becoming part of the Harrow family offers real benefits for teachers. Professional development links are flourishing and there are established pathways for career progression within the family.



Binding Links

Each Harrow international school has its own Harrow Agreement, a legally binding relationship that outlines the roles and responsibilities of the Harrow Foundation (London), AISL and the individual school.

Each Harrow Agreement has important appendices that define the accountabilities for the operation of the individual school. AISL is the operating company for the Harrow LiDe Schools, providing strategic oversight, co-ordination and quality assurance for the existing schools and establishing new Harrow bilingual schools.

WHAT WE ARE LOOKING FOR

At Harrow Hengqin, we are looking for passionate and dedicated teachers who are eager to grow both personally and professionally while contributing to the success of a rapidly developing bilingual school in China.

Our ideal candidates are:



- **Energetic and committed:** You thrive in an innovative and evolving educational environment and embrace the challenges of teaching in a bilingual school.
- **Dedicated to excellence:** You believe in inspiring each child to achieve their academic potential and excel through outstanding teaching and individualized pastoral care.
- **Adaptive and reflective:** You are open to exploring new teaching methods, using digital technologies confidently, and adapting to the unique dynamics of a bilingual and international school setting.
- **Team players:** You value collaboration and actively contribute to a supportive and vibrant school community.
- **Growth-oriented:** You view teaching as a lifelong journey of learning and professional development and are eager to grow alongside the school.

CAREER DEVELOPMENT PATHWAYS & PROMOTION MECHANISMS

Career Progression Framework

AISL offers transparent and structured career pathways to empower staff growth:

Teaching Pathway:

Teacher → Subject Leader → Head of Department → Head of Academics → Head of School

Yeargroup Pathway:

Teacher → Year Group Leader → Head of Phase → Deputy Head of School → Head of School

Pastoral Pathway:

Teacher → Tutor → Head of House → Deputy Head of School → Head of School

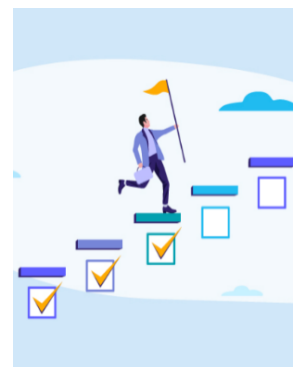
Many teachers switch between these type of pathways during their career at Harrow and elsewhere. There are many career-enhancing opportunities to take on responsibility other than through appointed posts, and these help gain experience for when the time is right for the next step.

Not all these posts are available at all Harrow schools since structures and scales of school differ.



Promotion Criteria:

- Teaching Excellence: Demonstrated through student progress data, lesson observation outcomes, and parent/student feedback.
- Professional Development: Performance well to meet all the standards and contributions to pedagogical research.
- Leadership Impact: Leading cross-departmental initiatives, mentoring colleagues, or driving school improvement projects.



Professional Development Programmes

AISL prioritises continuous professional development (CPD) through globally recognised opportunities:

- **AA Platform: The Super School Learning Hub**
 - Unlimited Access: 500+ on-demand courses covering pedagogy, bilingual education, EdTech integration, and leadership.
 - Key Features:
 - *Harrow LiDe Modules: Culturally responsive teaching, bilingual classroom management.*
 - *Subject Mastery: Advanced training in STEM, humanities, and languages.*
 - *Leadership Development: Strategic planning, conflict resolution, and innovation management.*
- **TES/UCL Partnership Programmes (Fully Funded):**
 - **NPQLT** (National Professional Qualification for Leading Teaching): Focuses on curriculum design, coaching, and improving teaching standards across departments.
 - **IPQSL** (International Professional Qualification for Senior Leadership): Prepares staff for senior roles with a focus on operational and strategic leadership.
 - **QTS** (Qualified Teacher Status): Supports international teachers in obtaining UK-recognised accreditation.
 - *Application Process: Annual cohort selection via school nomination and panel review.*

WHY HARROW HENGQIN

- **Location Advantage:** Situated in the Greater Bay Area, near Hong Kong and Macau, our school offers an enriching cultural experience and convenient access to major cities within two hours by train or boat.
- **A Prestigious Brand:** Harrow Hengqin is part of the world-renowned Harrow family of schools, providing opportunities to collaborate and grow within a respected network spanning Mainland China, Japan, Thailand, and beyond.
- **Professional Development:** We are committed to supporting continuous professional development, offering opportunities for teachers to enhance their skills and advance their careers.
- **Dynamic Work Environment:** Experience the unique rewards of working in a bilingual school, where you'll engage with students and staff from diverse backgrounds, creating a rich and stimulating educational atmosphere.
- **Support for Excellence:** Our state-of-the-art facilities, robust curriculum, and leadership pathways empower you to focus on excellence both in and beyond the classroom.
- **Community Spirit:** Harrow Hengqin fosters a strong sense of community where teachers, students, and parents work together to create an inclusive, supportive, and inspiring environment.



LIVING AND WORKING IN HENGQIN

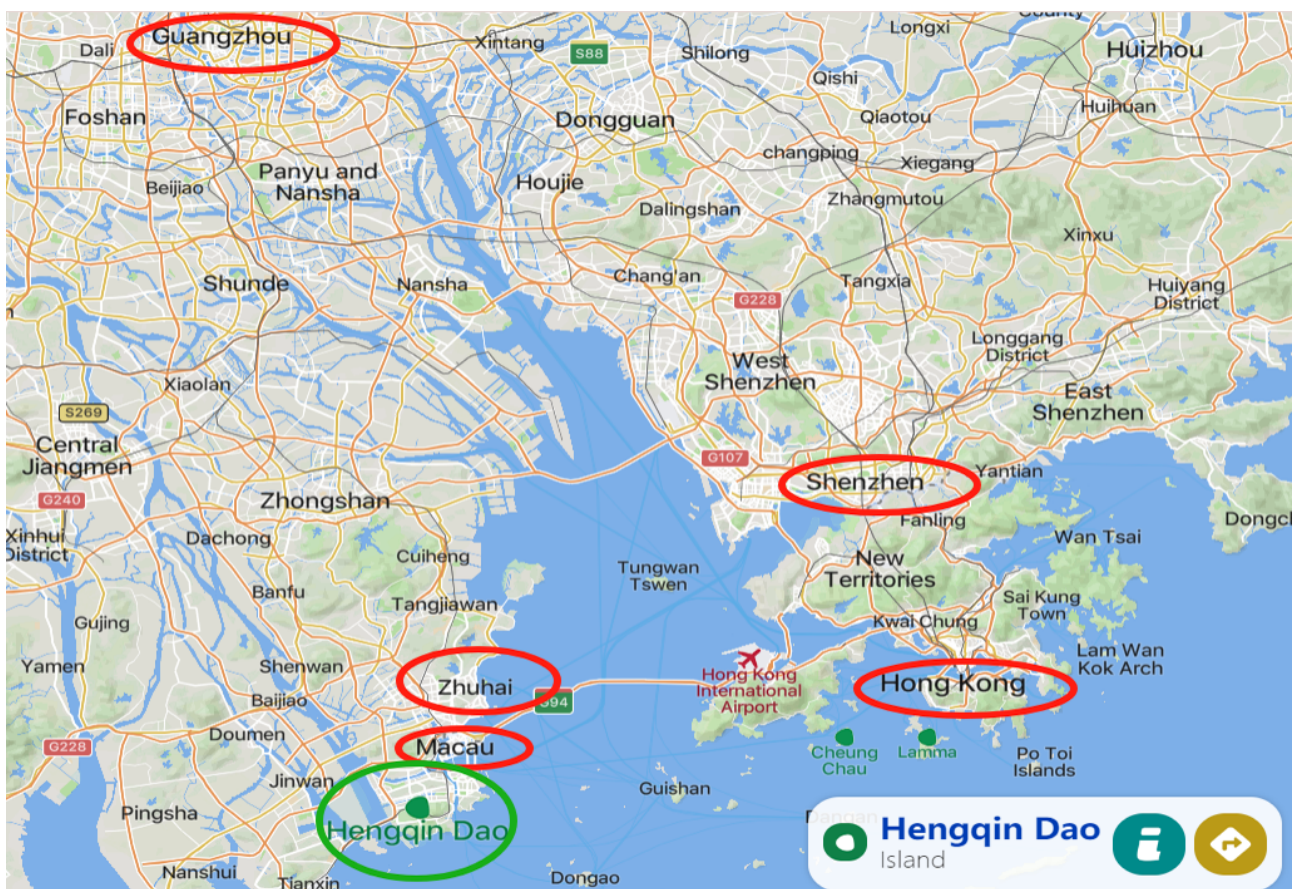
ABOUT HENGQIN & ZHUHAI

Hengqin

Hengqin is a rapidly developing island located in the Greater Bay Area of Guangdong Province, positioned next to Macau and opposite the bay to Hong Kong. Known for its innovative development and strategic role in international collaboration, Hengqin combines modern infrastructure with picturesque natural surroundings. Its government-supported initiatives promote sustainable growth, cultural integration, and the creation of a dynamic environment for education, business, and tourism. Hengqin's unique status as a bridge between mainland China and Macau has made it a hotspot for international investment and talent. Offering convenient transport links to major cities across the region within two hours by train or ferry, Hengqin is not only a gateway to opportunity but also a tranquil and family-friendly community.

Zhuhai

Zhuhai, the city next to Hengqin, is a coastal gem in southern China renowned for its clean environment, high quality of life, and reputation as the "City of a Hundred Islands." As one of China's earliest Special Economic Zones, Zhuhai has flourished into a vibrant urban centre while retaining its charm as a peaceful and picturesque city. Its well-planned infrastructure, green spaces, and iconic landmarks, such as the Zhuhai Opera House and Lovers' Road, offer a blend of modernity and natural beauty. With its strong focus on education, technology, and tourism, Zhuhai has become a hub for both international and domestic industries, making it an attractive destination for professionals, families, and visitors alike. Its increasing integration with neighbouring cities, including Macau and Hong Kong via the world-famous Hong Kong-Zhuhai-Macau Bridge, makes Zhuhai a key player in the Greater Bay Area's development.



WEATHER

Zhuhai/Hengqin, located in southern China along the coast, enjoys a subtropical monsoon climate. The weather is characterised by mild winters, warm summers, and high humidity throughout the year, offering a comfortable environment for expats accustomed to temperate climates.

- **Spring (March to May):** Spring in Zhuhai is warm and humid, with temperatures ranging from 18°C to 26°C (64°F to 79°F). Occasional rainfall is common, so carrying an umbrella is recommended. The city's lush greenery flourishes during this season.
- **Summer (June to September):** Summers are hot and humid, with temperatures averaging 25°C to 32°C (77°F to 90°F). Afternoon showers and occasional typhoons are typical, but air conditioning in most homes and buildings ensures comfort. It's a great time to enjoy Zhuhai's beaches and coastal activities.
- **Autumn (October to November):** Autumn is a pleasant season with moderate temperatures ranging from 20°C to 28°C (68°F to 82°F). It's the best time to explore the city's outdoor attractions, as the weather is dry and sunny.
- **Winter (December to February):** Winters are mild and short, with temperatures between 12°C and 20°C (54°F to 68°F). There's little rainfall, and the cooler weather makes it ideal for sightseeing and hiking.

TRANSPORTATION

Zhuhai and Hengqin boast a modern and efficient transportation network that facilitates convenient travel within the city, across the Greater Bay Area, and beyond. Whether you're commuting locally or exploring nearby cities like Macau, Hong Kong, or Guangzhou, the region offers seamless connectivity.



Local Transportation:

- **Taxis and Ride-Hailing Services:** Taxis are readily available, and ride-hailing apps like Didi provide an easy and flexible way to get around the city. Hengqin also benefits from the same services for quick and comfortable transport.
- **Bicycles and E-Scooters:** Many areas in Zhuhai and Hengqin are bike-friendly, with rental stations and designated paths, making it easy to explore the scenic waterfronts and parks.

Cross-City Connectivity:

- **Macau:** Hengqin is directly connected to Macau via the Lotus Bridge. Travelers can drive or use shuttle buses to cross the border in minutes. Immigration facilities ensure smooth transit between the two cities. The new Hengqin Metro station opened in 2024 within Hengqin Port after immigration on the Macau side to allow easy transit to sites in Macau.
- **Hong Kong:** The Hong Kong-Zhuhai-Macau Bridge (HZMB), the world's longest sea-crossing bridge, connects Zhuhai to Hong Kong in about an hour by car or shuttle bus, offering breathtaking views during the journey.
- **Greater Bay Area Cities:** The Guangzhou-Zhuhai Intercity Railway provides fast and convenient access to major cities like Guangzhou and Foshan, with travel times as short as an hour. Future extensions will enhance connectivity further.
- **Ferries:** Regular ferry services connect Zhuhai to Hong Kong (70 mins) and Hengqin to Shenzhen (80 mins), offering a relaxing alternative to road travel.

COST OF LIVING

Transportation

SERVICE	AVERAGE PRICE
Taxi / Didi	10-25 RMB within 4 km
Bus to Hong Kong	80-120 CNY
Ferries to Hong Kong	180 CNY

Monthly Bills (on campus)

SERVICE	AVERAGE PRICE
Electric charge - normal (person/month)	150-250
Electric charge - hot season (person/month)	250-500
Water fee (person/month)	20-30

Monthly Bills (on campus)

SERVICE	AVERAGE PRICE
Meal Inexpensive Restaurant	50CNY
Meal Expensive Local Restaurant	150CNY
Meal Expat Restaurant	200CNY
Meal at McDonalds	50CNY
Domestic Beer in a Bar/Restaurant	20-35CNY
Imported Beer in a Night Club / High End Venue	50CNY
Cocktail in a Night Club / High End Venue	80-90CNY

FOOD

- **Culinary Diversity:** Zhuhai, being a more established city, boasts a rich culinary scene. It's known for its seafood, but also for its fusion of Chinese and Western dishes.
- **Zhuhai's Famous Dishes:**
 - **Seafood:** Much like Hengqin, Zhuhai's seafood is a highlight, with specialties like steamed grouper, oyster omelets, and seafood hotpots.
 - **Dim Sum:** Known for its dim sum, Zhuhai offers a wide variety of steamed, fried, and baked delights, often enjoyed in the morning or afternoon tea sessions.
 - **Street Food:** Zhuhai has vibrant street food scenes, particularly in areas like Gongbei, where you can find all sorts of snacks like stinky tofu, barbecue skewers, and various fried treats.
 - **High-End Dining:** With the rise of tourism and international business, Zhuhai now has numerous high-end restaurants offering gourmet experiences from around the world.
 - **Night Markets:** Places like Xianglu Bay Night Market are famous for their lively atmosphere and a wide array of food stalls offering everything from grilled meats to exotic fruits.
 - **Farm-to-Table:** With a focus on fresh ingredients, many restaurants in Zhuhai emphasize farm-to-table dining, sourcing ingredients directly from local farms or even their own gardens.

LOCAL FOOD RECOMMENDED

Yuejiang Private Kitchen 粤匠私厨

It is a renowned Cantonese restaurant has been steadily rooted in Macau for over two decades. The restaurant is dedicated to promoting the unique flavors of Macau-style Cantonese cuisine. From their menu offerings to service management, every aspect reflects the brand philosophy of "Cantonese ingenuity, the more dedicated" – a persistent pursuit of traditional craftsmanship, continuous innovation, and the relentless quest for excellence to create "the extraordinary in ordinary home-cooked dishes".



Shen Jian Shan Zhuang 神箭山庄

Shen Jian Shan Zhuang is a restaurant hidden in the depths of Hengqin, offering a unique dining experience with a poetic and atmospheric name that evokes the feeling of a secluded paradise. The restaurant specializes in Shunde cuisine but innovates and modifies dishes based on guests' tastes and requests. It has been operating for over 20 years and is known for its signature dishes.



Chinese Food nearby



Chill House 沐

It offers a contemporary dining experience with a focus on fresh, high-quality ingredients and a relaxed atmosphere. Located in Hengqin, the restaurant features a unique blend of local and international flavors, creating an inviting environment for both casual meals and special occasions. There is a second Chill House in the Rowing Park 5 mins walk from our school.

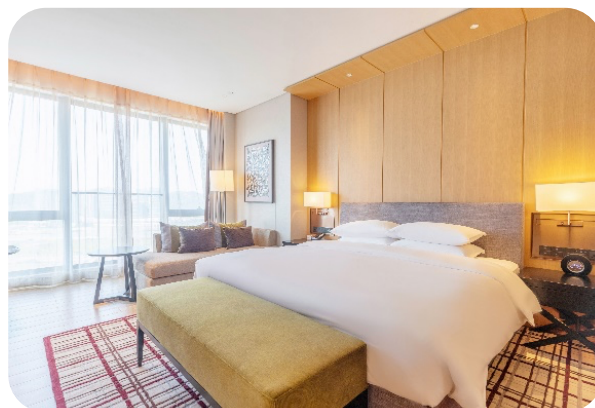


Commune 幻师

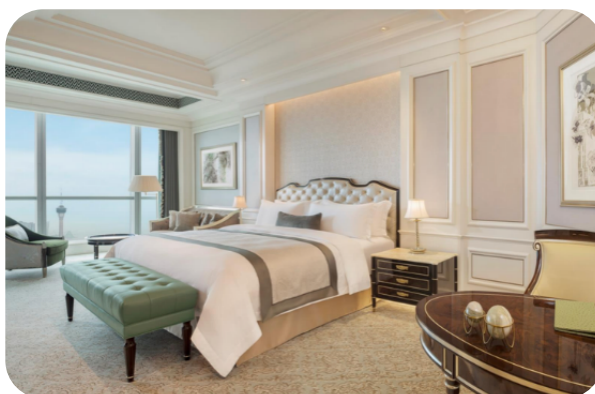
It is a modern and stylish restaurant located in Zhuhai's Huanyu City. Offering a creative fusion of global flavors, it is known for its elegant design and inviting atmosphere. The interior seamlessly combines contemporary and natural elements, creating a relaxing and chic dining experience. They offer many different kinds of beers and cocktails.

HOTELS

Hyatt Regency Hengqin 横琴凯悦酒店



The St. Regis Zhuhai 珠海瑞吉酒店



HOSPITALS AND CLINICS

Hengqin Hospital, The First Affiliated Hospital of Guangzhou Medical University 广州医科大学附属第一医院横琴医院

The closest comprehensive hospital near the school is The First Affiliated Hospital of Guangzhou Medical University (GZMU), located just a 10-minute drive away. It is a well-equipped medical facility offering a wide range of healthcare services and is covered by local medical insurance making it a convenient and reliable option for medical needs.

Address in Chinese: 横琴粤澳深度合作区宝兴路 118 号
Phone: 0756-3313572 (Working hours 8:30-12:00,
14:00-17:30)



The Fifth Affiliated Hospital, Sun Yat-sen University 中山大学第五附属医院

It is a top-tier medical institution in Zhuhai, offering comprehensive healthcare services. Known for its advanced facilities and expert staff, it provides emergency care, specialized treatments, and routine check-ups. The hospital supports English-speaking services, ensuring clear communication for international patients. It is also part of our commercial insurance direct payment network, simplifying billing and coverage.

Chinese Address: 广东省珠海市香洲区梅华东路 52 号
Phone: 0756-2528888 (Working hours 08:00-12:00, 14:30-17:30)



SUPERMARKETS

Sam's Club 山姆会员商店

Sam's Club Zhuhai is a retail warehouse offering a wide range of high-quality products at competitive prices. Located conveniently in Zhuhai, it provides an excellent shopping experience with a focus on bulk purchases, including groceries, electronics, home goods, and more. Known for its exclusive member benefits, such as discounts and special deals, Sam's Club also features a food court and fresh produce section. Additionally, they offer delivery services to the apartments, making shopping even more convenient.



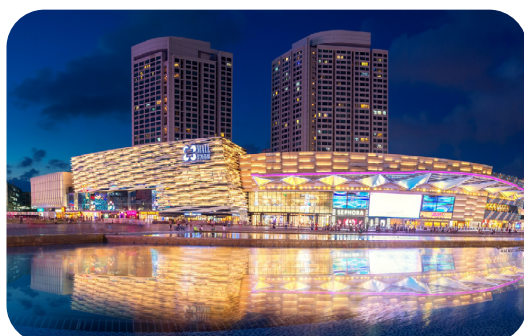
Walmart 沃尔玛



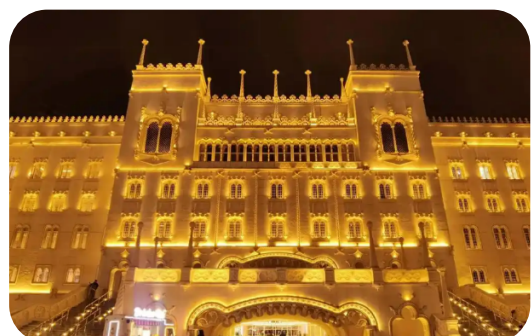
Spar 嘉荣超市



Haufa Mall 南屏华发商都



Ponto Shopping Mall 丽骏庞都



ATTRACTIONS

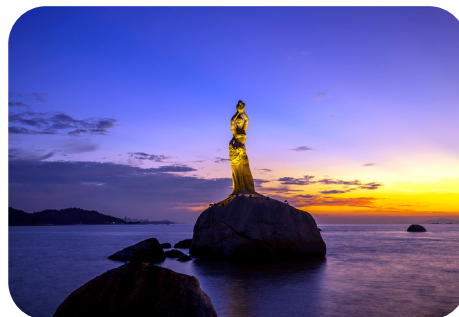
Chimelong Ocean Kingdom on Hengqin Island

is a world-class marine-themed resort, featuring thrilling rides, spectacular animal shows, and immersive aquatic exhibits. Located just a 10-minute drive from our school, it's a perfect destination for family fun, educational field trips, or weekend adventures!



The symbol of Zhuhai – The Fisher Girl Statue

If you head east along the coastal road from the Port, you'll come across this famous landmark and symbol of Zhuhai. The Fisher Girl Statue stands elegantly at the edge of Xianglu Bay welcoming all who visit the city. Her main purpose seems to be a photo opportunity out across the bay. Chinese tourists clamber across the rocks to have their photos taken while mimicking her stance. At night time this stretch of the bay is illuminated and couples take romantic walks along the seafront, which is why it's also earned the name of "Lover's Road".



Zhuhai New Yuan Ming Palace – Replica of Beijing Summer Palace

This is a partial replica of the Old Summer Palace in Beijing which was burned to the ground in 1860 by the French and British troops during the Opium Wars. This reproduction in Zhuhai attracts millions of visitors every year and is probably one of the main reasons to take a visit to this city. It is located at the base of the Stone Forest Mountain in a large park and provides a leisurely day of walks and exploration around the palace and gardens. There are cultural performances throughout the day and a water city providing entertainment for children and adults. It is open from 9.30am until 9.00pm.



Jinshan Park

In the middle of the city, Jinshan Park is a wonderful green space offering some of the best views across the city and sea from the top of Shijing Mountain. You can walk to the top or take the easy option – a chairlift costing 50 Yuan. It can be busy as the park is a popular stop for tourist coaches.



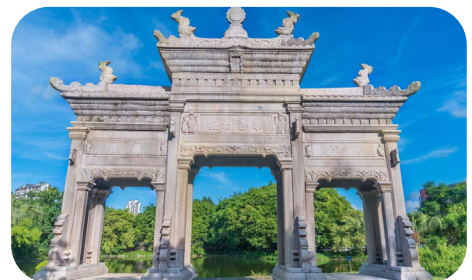
Jintai Temple

This temple is a long way from the city centre, around 90 minutes by bus, but if you are staying for a few days then it's worth a visit. It's a working Buddhist temple, built in the late Song Dynasty, in a beautiful, tranquil environment. You'll get to venture out into the Chinese countryside and the temple will be found close to the base of Huangyang Mountain in the Doumen province. The walk from the bus stop is around 15 minutes, but there is a restaurant for lunch serving vegetarian food. Entry is free and it's open all day. Huangyang Mountain also has a number of attractions including green tea fields, pools and lovely waterfall.



Meixi Royal Stone Archways

Located in MeiXi Village in Qianshan Town, these impressive stone archways, unique to China, were built in the late 19th century. As well as the archways, you can visit the former residence of Chen Fang, his gardens and the cemetery. Chen Fang, was the first Chinese consul general in Honolulu. He was born in Meixi but travelled to Hawaii, and through his hard work became the first Chinese millionaire on the island of Oahu. He settled back in Zhuhai in 1890 where he became something of a local celebrity!



Zhuhai Museum

This recently renovated museum encompasses 13 exhibition halls and also has a good photographic introduction to the history of Zhuhai. How interesting you'll find it will depend on how much you enjoy looking at antique ceramics, bronzes, and Chinese handicrafts. But, if you need to fill an hour or so, it may be worth a visit. It is free and does have air conditioning. It's set in a four-acre park in the busy downtown area at 191 Jingshan Street, Jiuzhou.

